

2298

FALLER

D

- Vor Beginn des Bastelns sollten Sie sich mit den Spritzlingen und der Anleitung vertraut machen.
- Sollte es einmal vorkommen, daß ein Teil im Bausatz fehlt, kreuzen Sie bitte das fehlende Teil in der Anleitung an und schicken Sie diese bitte an Fa. Gebr. FALLER GmbH, Abt. Kundendienst, Kreuzstraße 9, 78148 Gütenbach. Sie erhalten dann umgehend Ersatz.
- **In diesem Bausatz sind einige Kunststoffteile übrig.**

GB

- Before commencing with the assembly please familiarize yourself with the parts and read the instructions carefully.
- In case of missing part(s) please indicate these on the instructions leaflet with a circle and return the leaflet to Gebr. FALLER GmbH, Kreuzstraße 9, 78148 Gütenbach, Germany. You will receive the replacement by return.
- **Some of the parts in this box are not needed to construct the model.**

F

- Avant de commencer le montage de votre maquette bien lire la notice et repérer les grappes.
- Si une pièce manquait dans une boîte, cochez la pièce correspondante sur la notice et renvoyez la nous à Gebr. FALLER GmbH, Kreuzstraße 9, D-78148 Gütenbach (R.F.A.). Nous vous ferons parvenir la pièce par retour.
- **Dans cette boîte se trouvent quelques pièces qui ne seront pas utilisées pour le montage.**

NL

- Vóór het bouwen zou men de gietstukken en de handleiding moeten bestuderen.
- Indien onverhoopt een onderdeel aan het bouwpakket ontbreekt, gelieve men het ontbrekende deel in de handleiding aan te kruisen en deze te zenden aan Gebr. FALLER GmbH, Kreuzstraße 9, D-78148 Gütenbach. U ontvangt dan omgaand en gratis het ontbrekende onderdeel.
- **Van dit bouwpakket worden enkele kunststof delen niet gebruikt.**

492 EXPERT

Flüssigkleber in Plastikflasche mit Spezialkanüle für feinste Klebstoffdosierung.

Liquid cement in plastic bottle with canule for very fine dosages.

Colle liquide en bouteille plastique avec bec verseur pour un dosage précis.

Vloeibare lijm in plastic-flacon met doseerbuisje om nauwkeurig te lijmen.



**688
Spezial-Seitenschneider**
zum gratfreien Abtrennen von feinsten Spritzteilen. Spitze 48° abgewinkelt. Nur für Polystyrol geeignet.

Special side cutter
for cutting off ultra-fine moulded parts without burrs. Tip angle 48°. Only suitable for polystyrene.

Pince coupante spéciale
pour couper sans bavure les pièces miniatures moulées par injection. Pointe coudée à 48°. Uniquement appropriée pour le polystyrène.

Speciale zijknijptang
voor het braamloos afknippen van de fijnste gietstukdelen. Hoek snijvlakken 48°. Alleen geschikt voor polystyrol.



Inhalt	Spritzlinge	01	1 x	04	1 x	07	1 x	10	1 x
Contents	Sprues	02	1 x	05	1 x	08	1 x	21	1 x
Contenu	Moulages	03	1 x	06	1 x	09	1 x		
Inhoud	Gietstukken								

Sa. Nr. 227 324 0

2 Fensterfolie

Schnittmusterfolie für Fenster (Gitter) von Trägermaterial abziehen und auf die Fensterfolie mit gleicher Größe blasenfrei aufbringen (**ohne Klebstoff!**).

Die benötigten Fenster (Gitter) werden ausgeschnitten und **ohne Schnittmusterfolie** auf die Rückseite der Fensterrahmen geklebt (Position laut Anleitung).

Window foil

Pull off pattern sheet for windows (grates) from carrier and apply it, bubble-free, to the window foil of the same size (**without any glue**).

Cut out the required windows (grates) and glue them to the rear side of the window frame **without pattern sheet** (position as to instructions).

Feuille fenêtre

Retirer la feuille matrice pour fenêtre (grille) du matériel support et l'appliquer sur la feuille-fenêtre de même dimension sans que des bulles ne se produisent (**sans colle**).

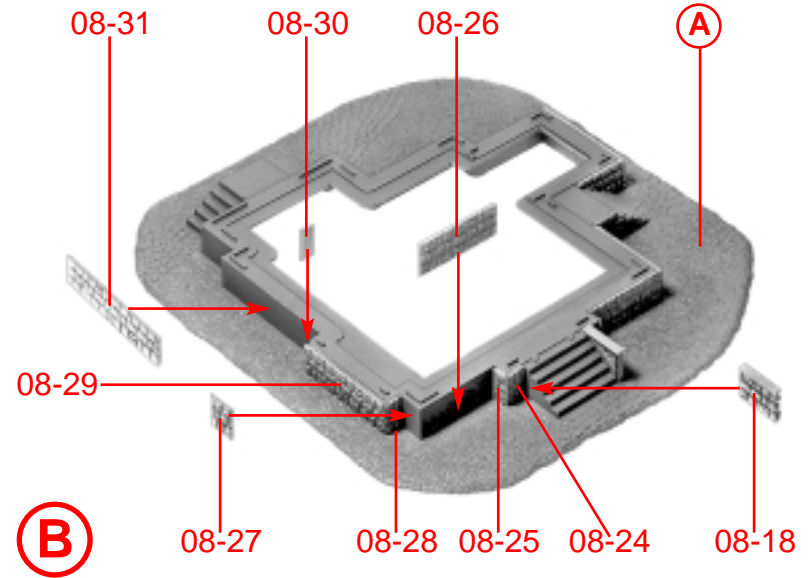
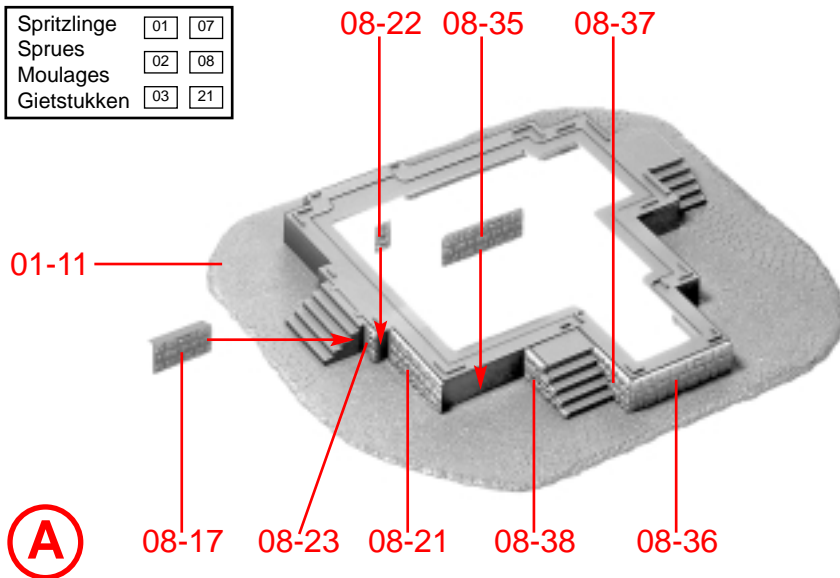
Découper le nombre de fenêtres (grilles) nécessaires et les coller **sans la feuille** modèle sur l'arrière des dormants (position selon instructions).

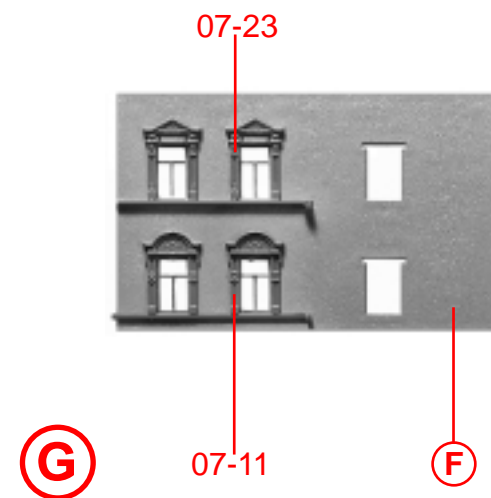
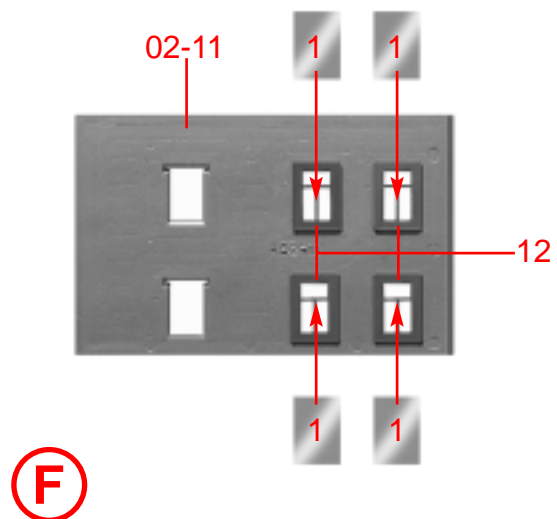
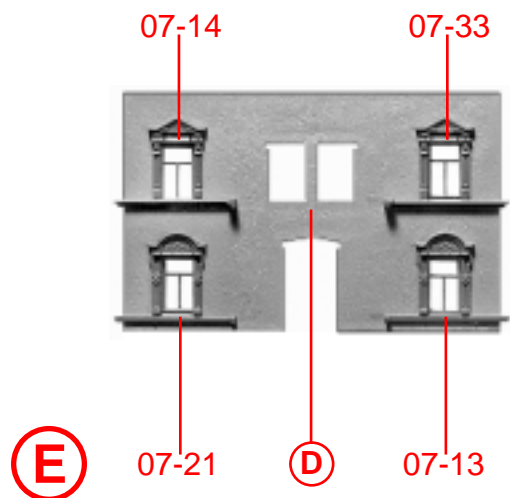
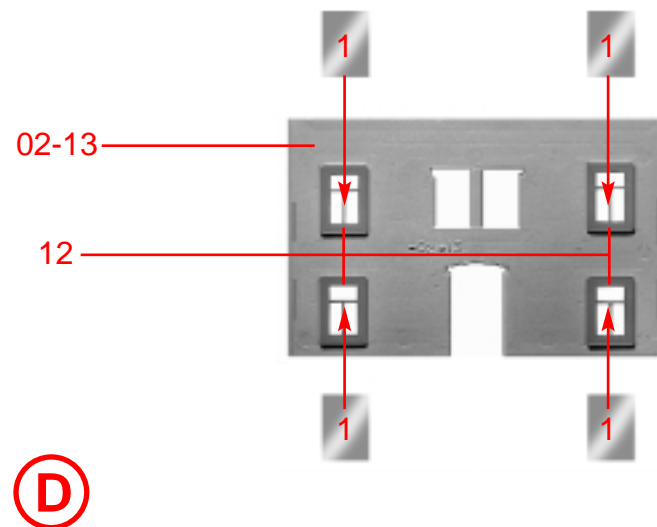
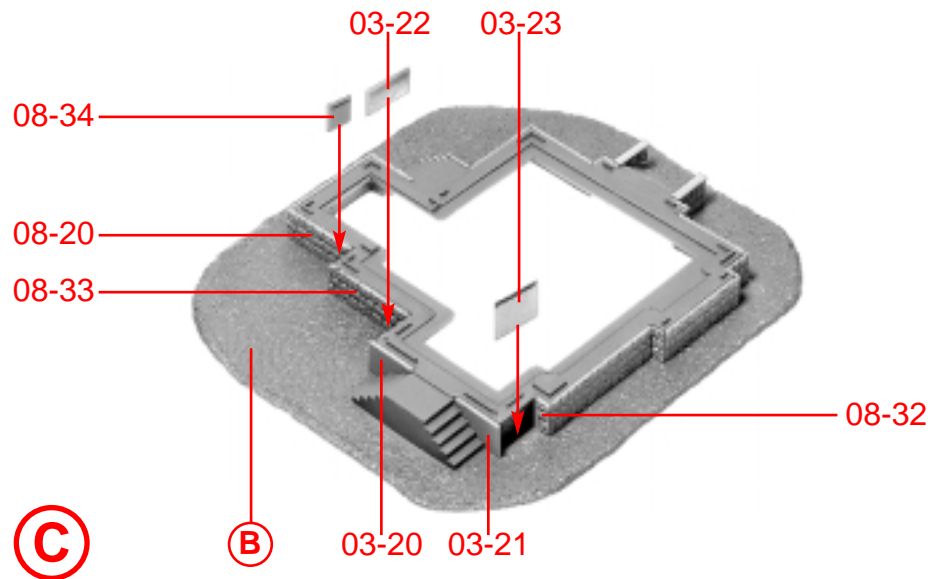
Raam folie

Knippatroonfolie voor de ramen (tralies) van schutblad afhalen en zonder blaasjes op het raam folie van dezelfde grootte aanbrengen (**niet lijmen!**).

De benodigde ramen (tralies) worden uitgeknipt en **zonder de knippatroonfolie** op de achterzijde van de raamkozijnen gelijmd (positie volgens handleiding).

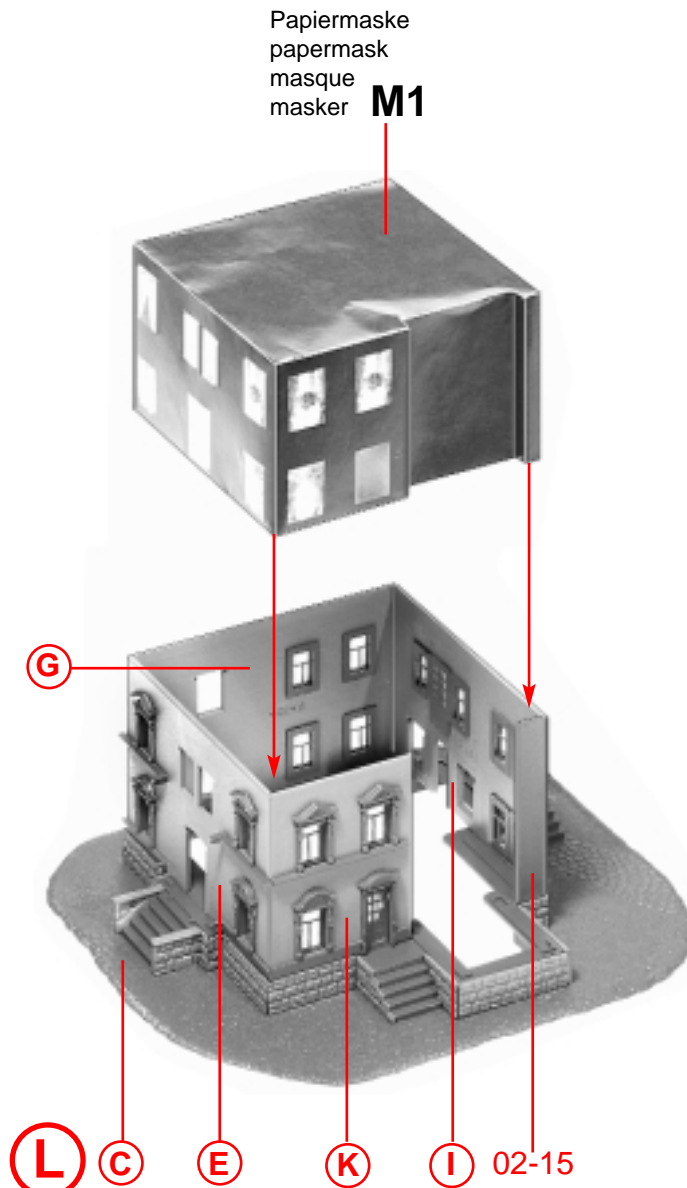
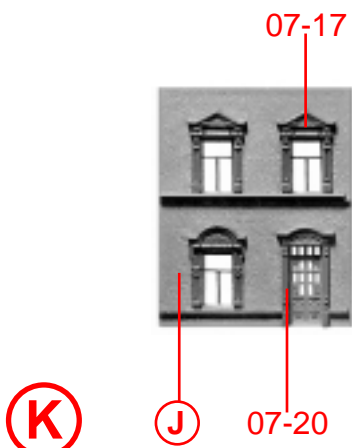
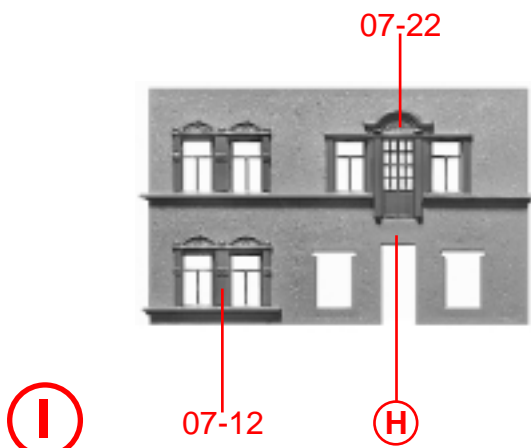
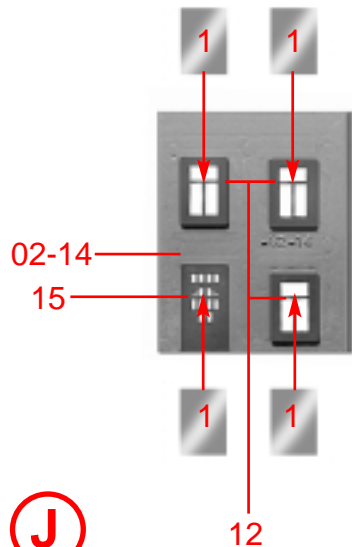
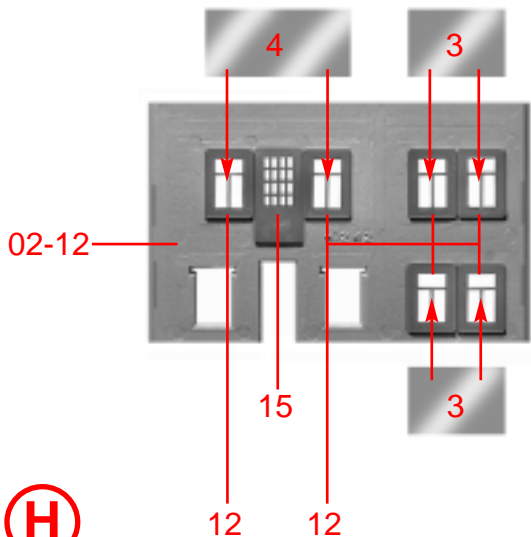
Spritzlinge	01	07
Sprues	02	08
Moulages	03	21
Gietstukken	03	21

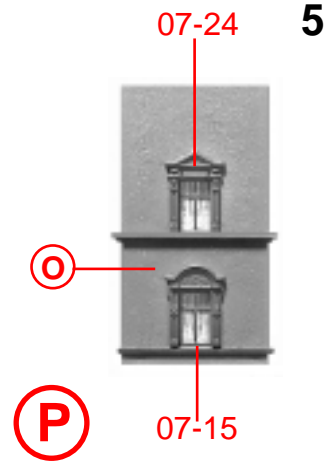
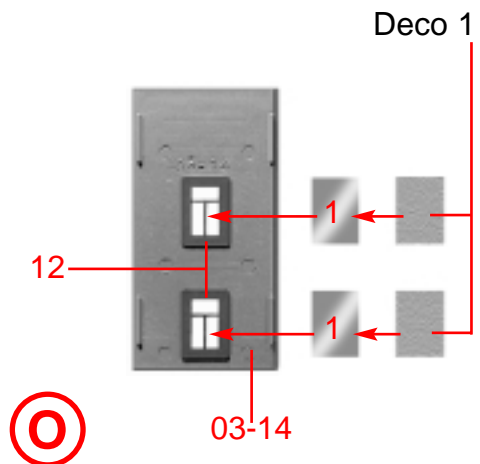
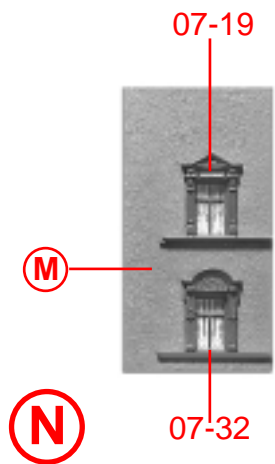
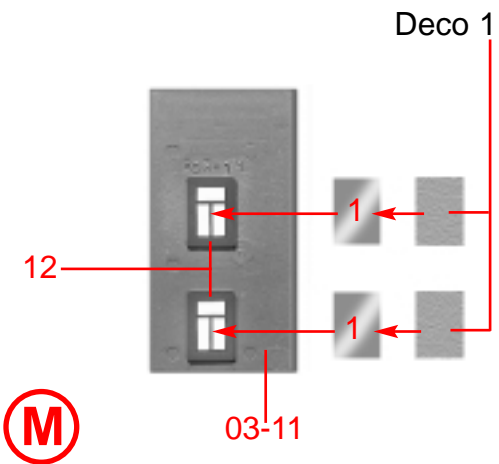




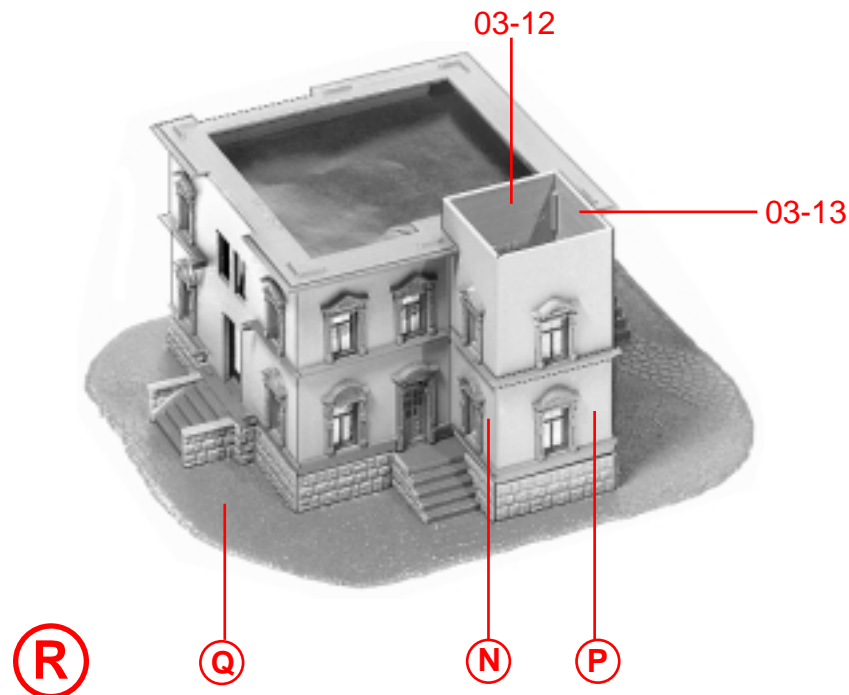
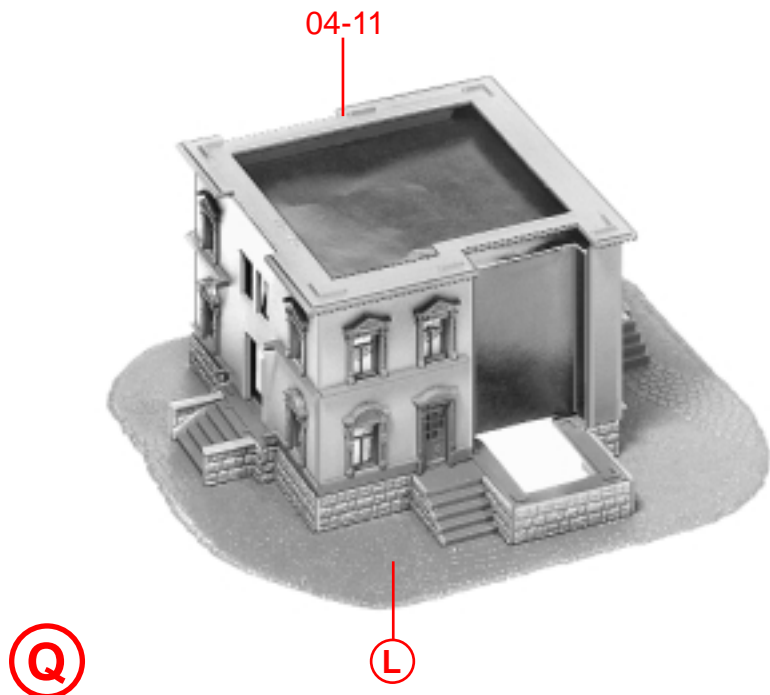
4

Spritzlinge	02	07
Sprues	03	21
Moulagas	04	
Gietstukken	04	



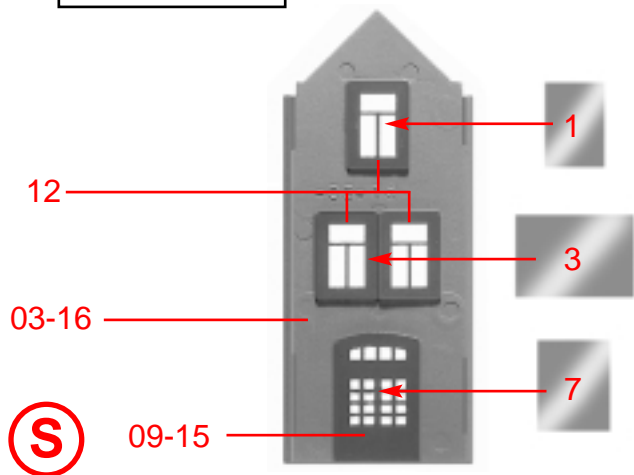


5



6

Spritzlinge	03	08
Sprues	05	09
Moulagés	07	21
Gietstukken	07	21



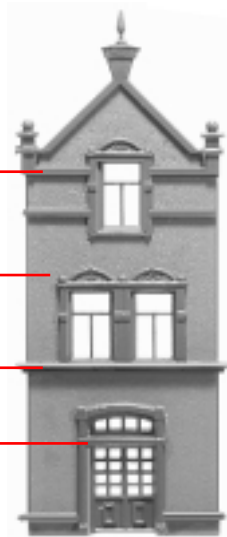
07-30

S

07-18

07-29

T

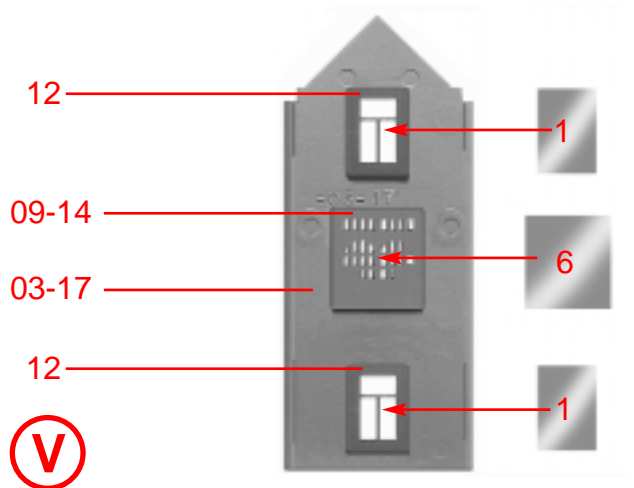
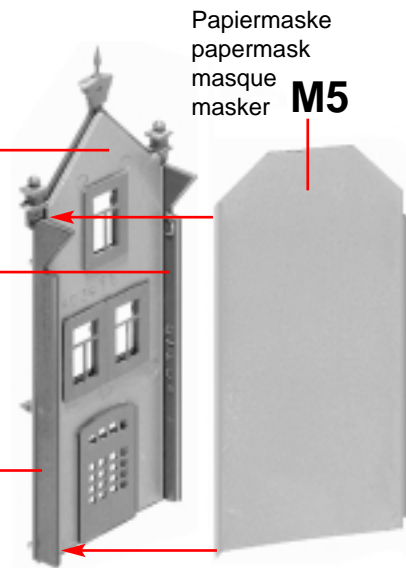


T

03-19

03-18

U



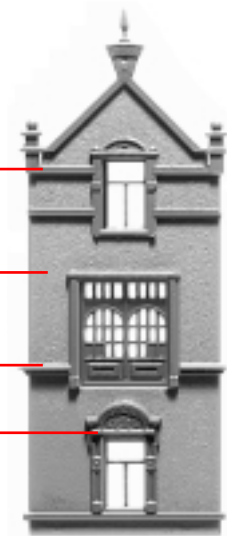
07-31

V

07-28

07-15

W

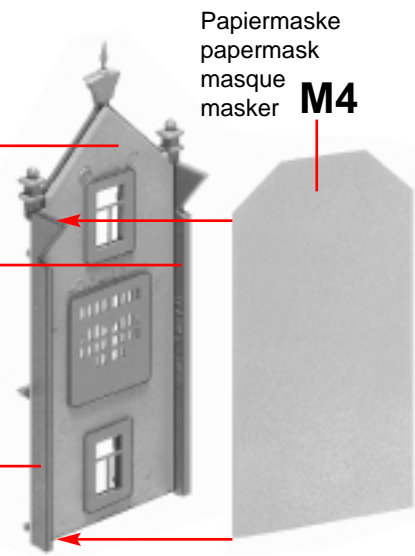


W

03-19

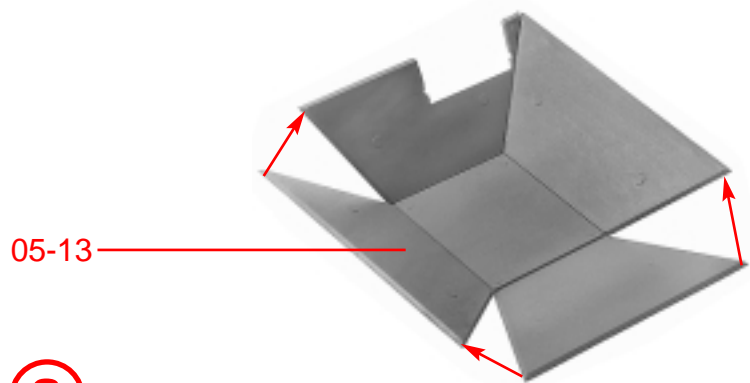
03-18

X

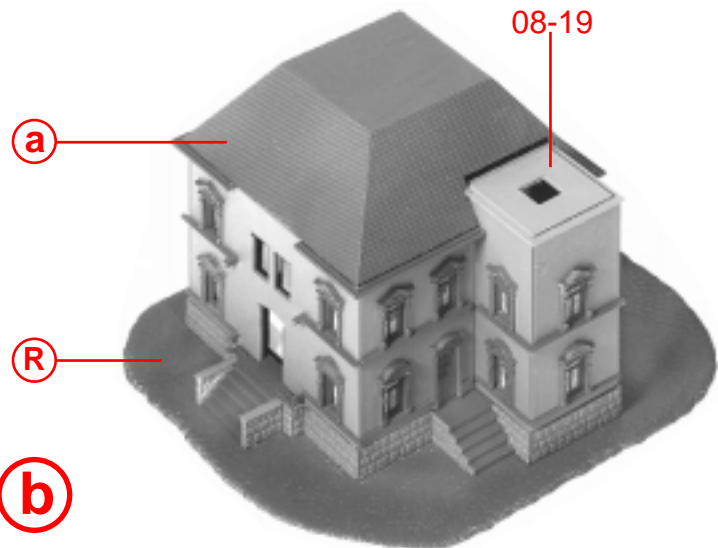


Vorsichtig biegen
Plier prudemment

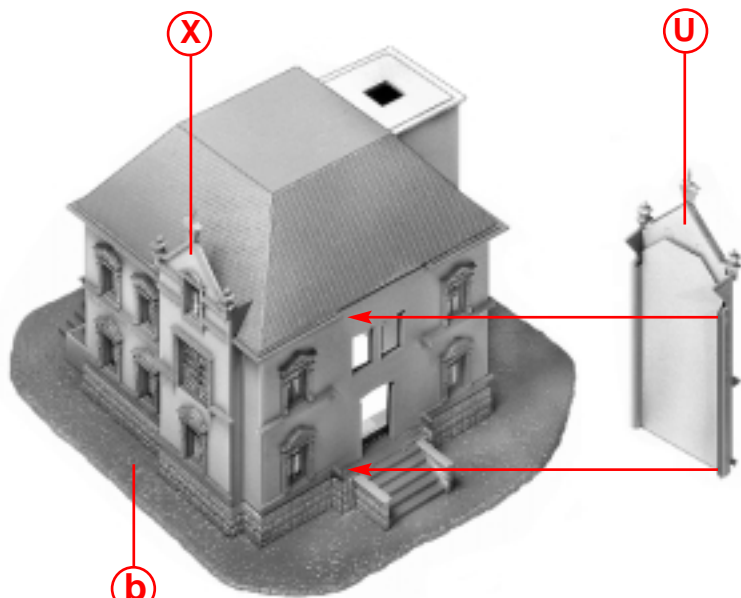
Bend cautiously
Voorzichtig buigen



a



b



c



d

8

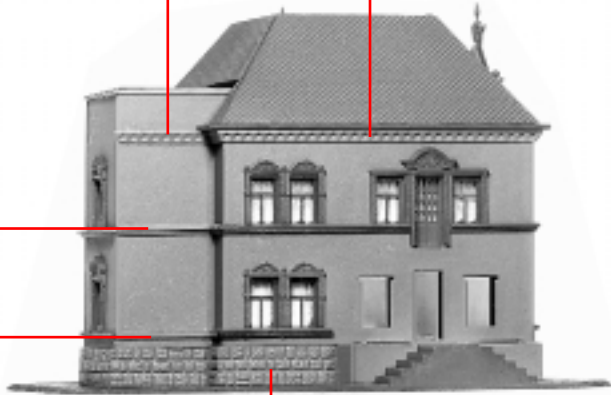
Spritzlinge	03	07	10
Sprues	05	08	
Moulagas	06	09	
Gietstukken			

08-43

08-49

07-27

07-25



e

d

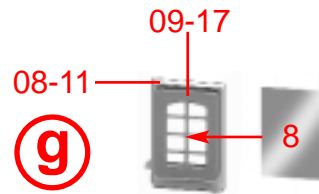
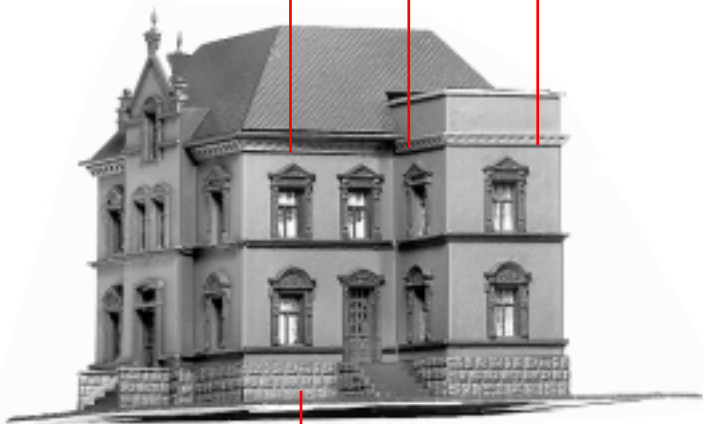
08-44

08-42

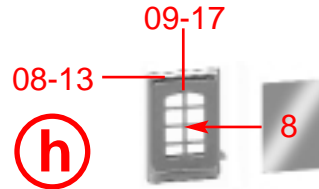
08-47

f

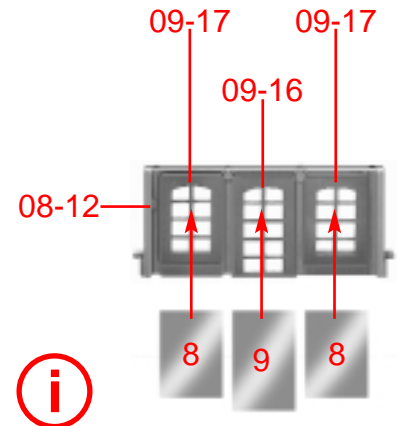
e



g

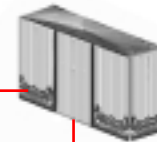


h



i

Papiermaske
papermask
masque
masker **M3**



g

i

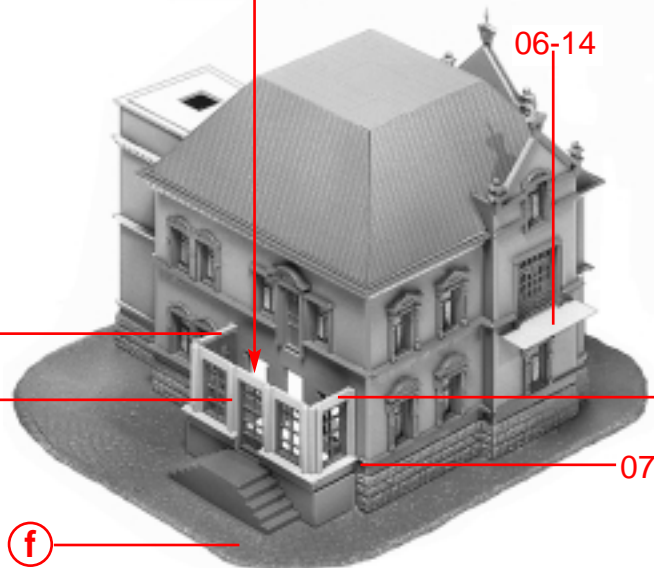
j

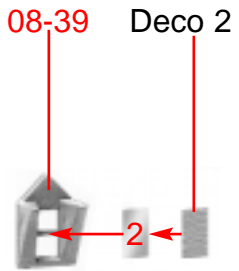
f

06-14

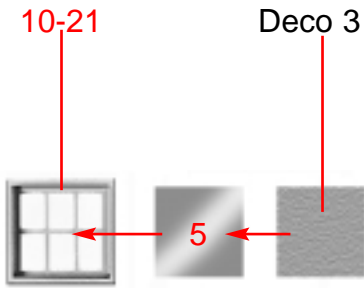
h

07-35

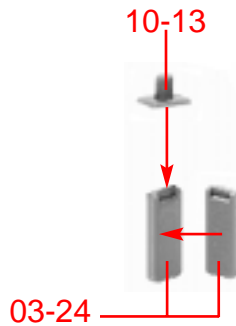




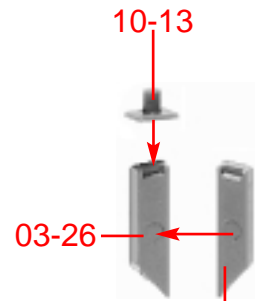
(k) 2 x



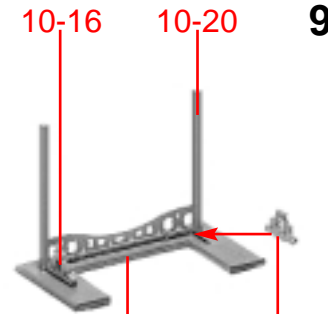
(l)



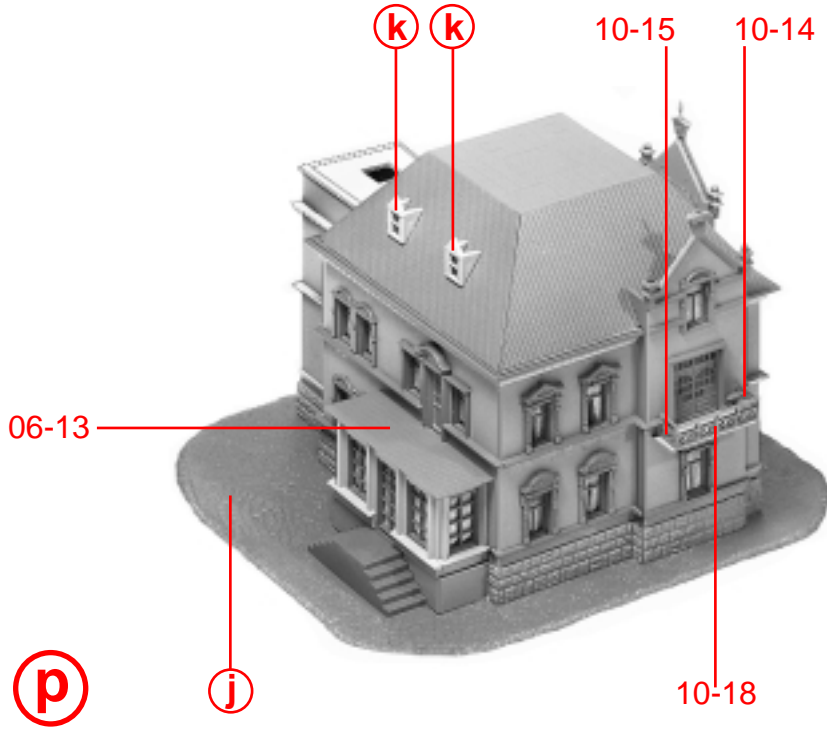
(m) 2 x



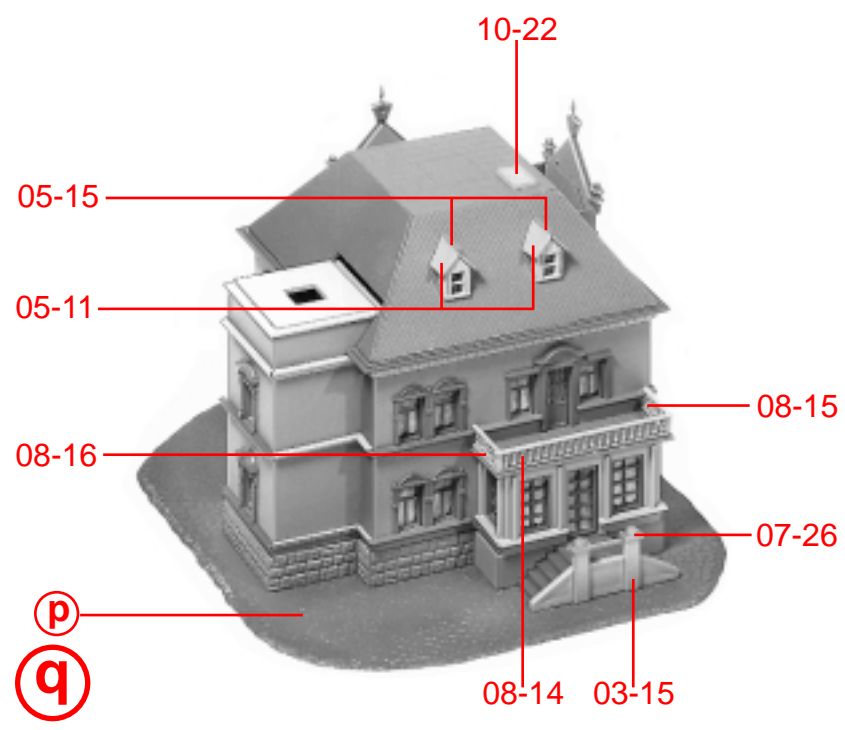
(n)



(o)



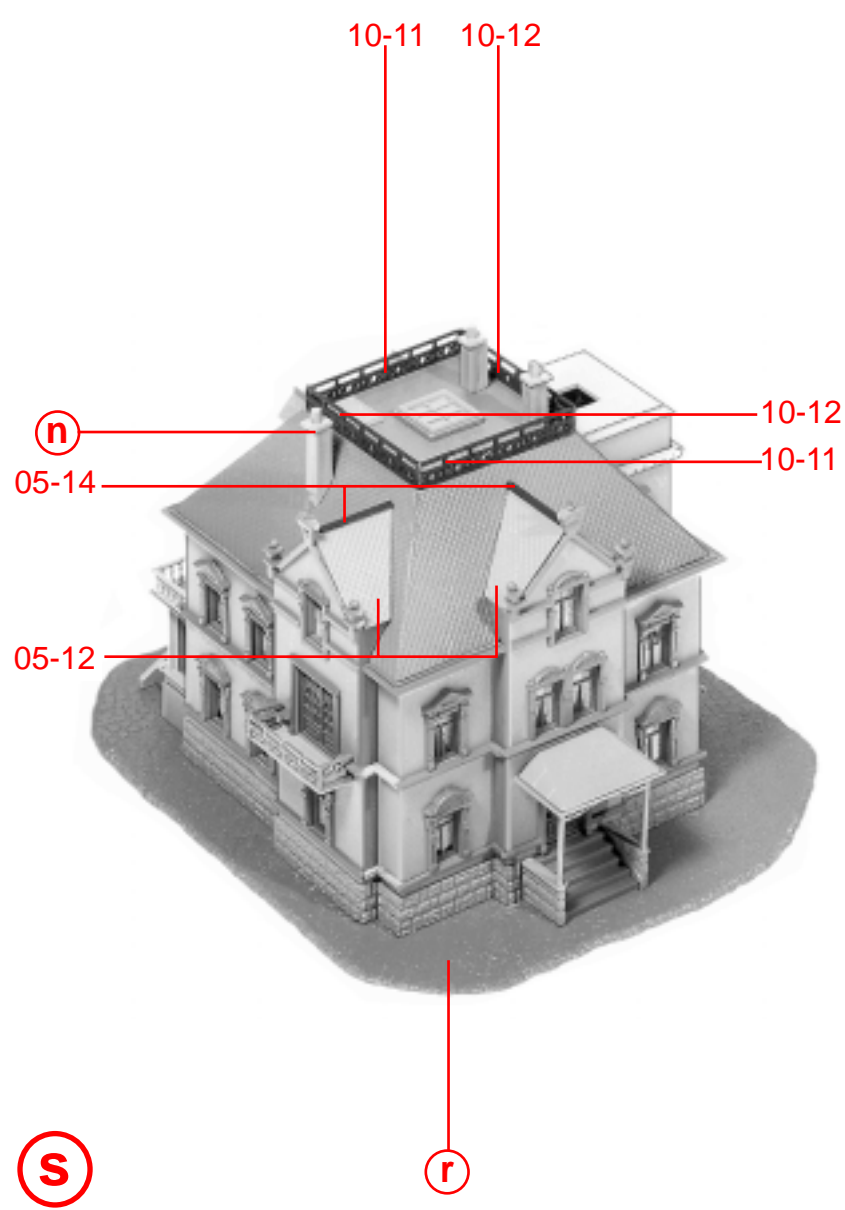
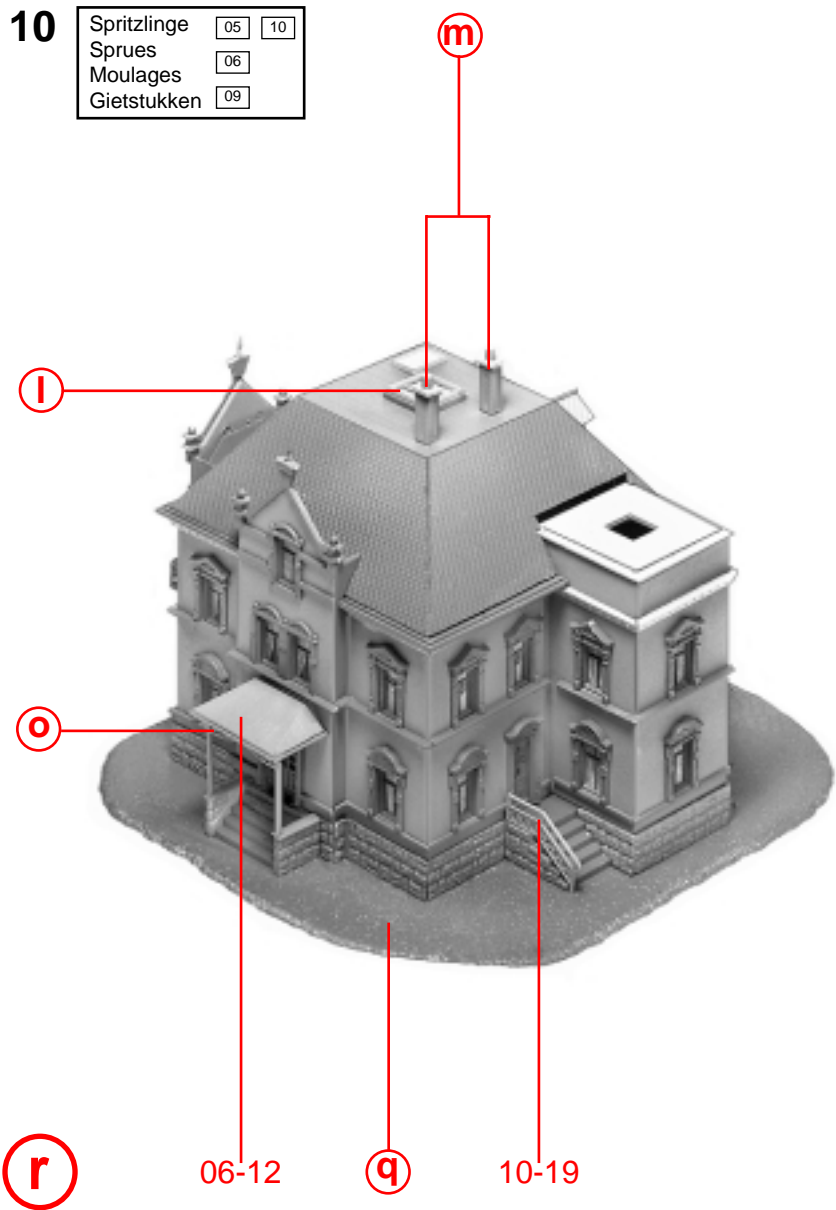
(p)



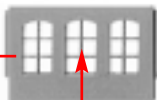
(q)

10

Spritzlinge	05	10
Sprues	06	
Moulagas	09	
Gietstukken	09	



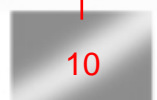
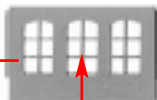
09-11



10

t 2 x

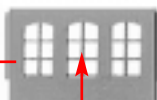
09-12



10

u

09-13



10

v

Papiermaske
papermask
masque
masker **M2**

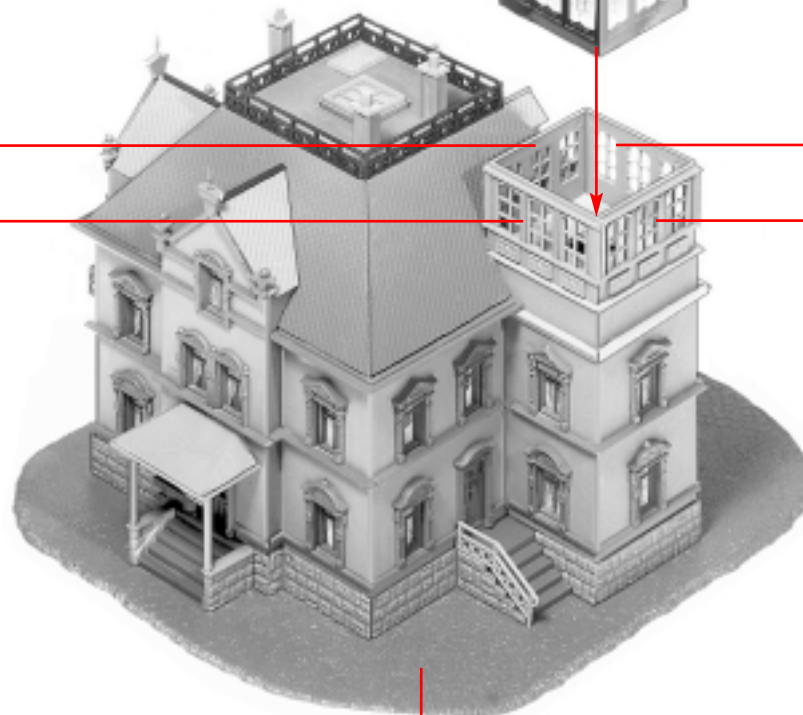


v

t

t

u

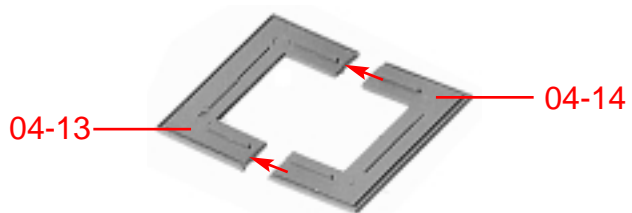


w

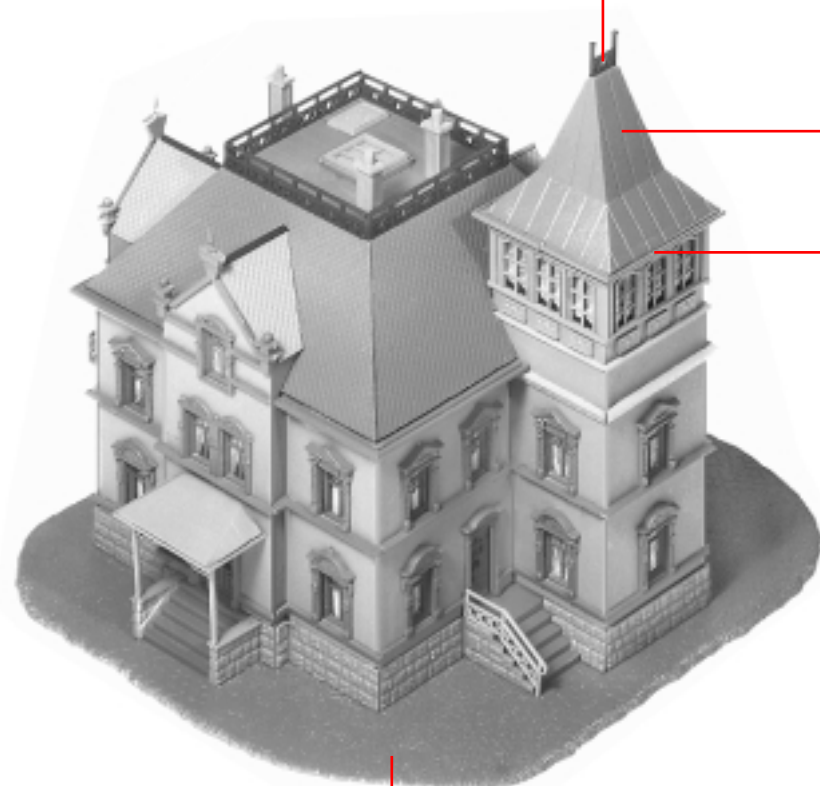
s

12

Spritzlinge	04
Sprues	06
Moulagés	10
Gietstukken	10



(X)



(y)

(w)